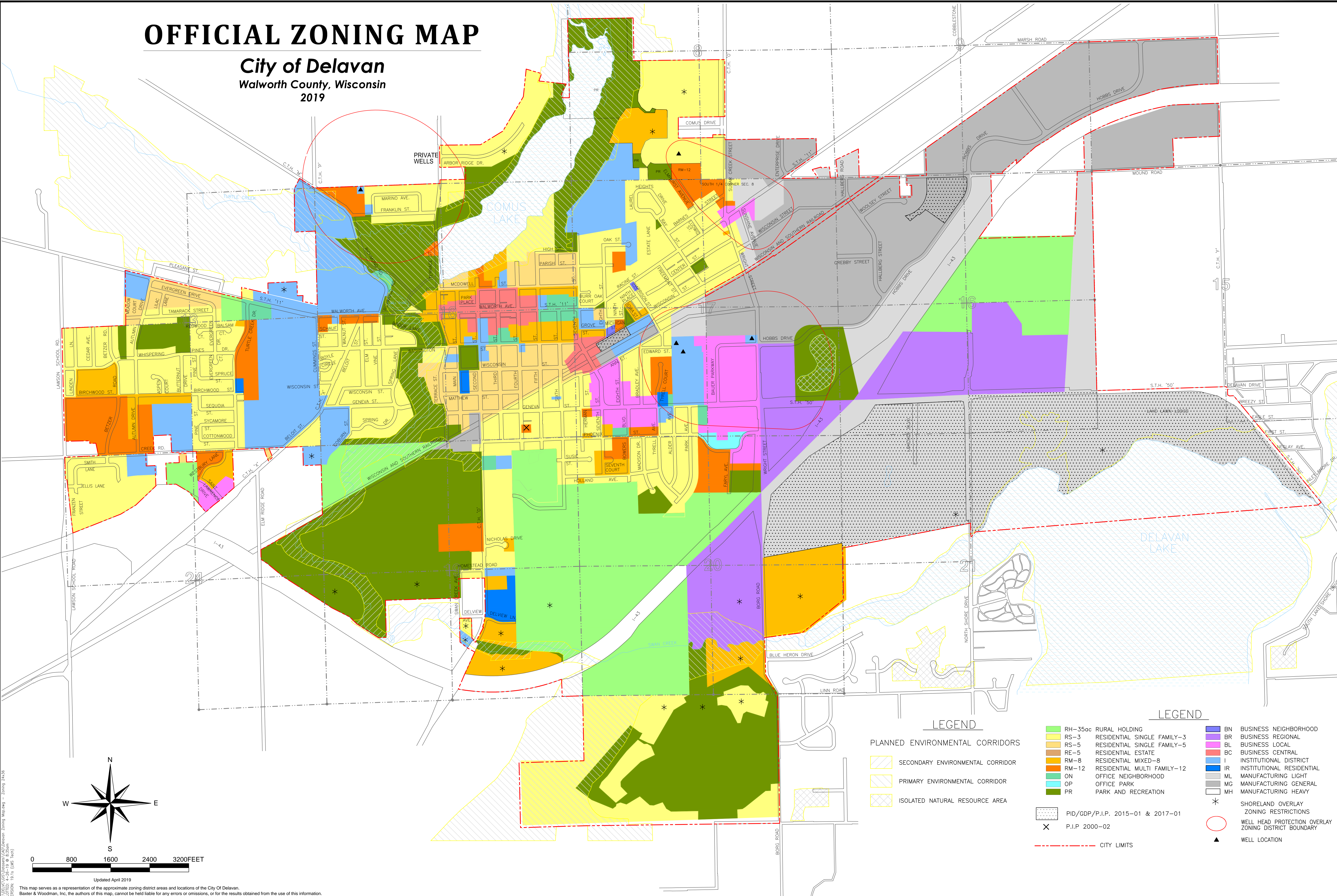


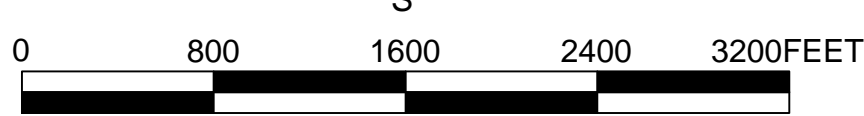
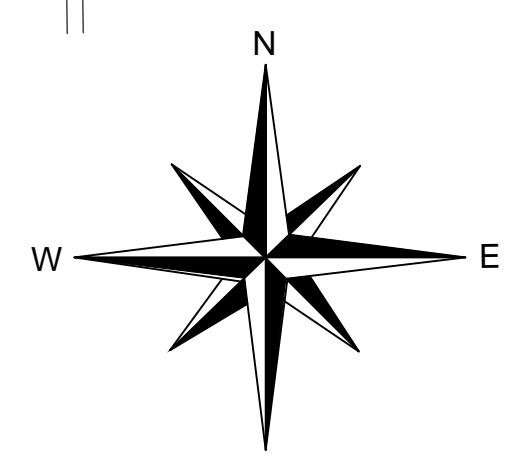
OFFICIAL ZONING MAP

City of Delavan
Walworth County, Wisconsin
2019



LEGEND

- | | | | | | |
|--|----------------------------------|--|-----------------------------------|--|---|
| | SECONDARY ENVIRONMENTAL CORRIDOR | | RH-35ac RURAL HOLDING | | BN BUSINESS NEIGHBORHOOD |
| | PRIMARY ENVIRONMENTAL CORRIDOR | | RS-3 RESIDENTIAL SINGLE FAMILY-3 | | BR BUSINESS REGIONAL |
| | ISOLATED NATURAL RESOURCE AREA | | RS-5 RESIDENTIAL SINGLE FAMILY-5 | | BL BUSINESS LOCAL |
| | | | RE-5 RESIDENTIAL ESTATE | | BC BUSINESS CENTRAL |
| | | | RM-8 RESIDENTIAL MIXED-8 | | I INSTITUTIONAL DISTRICT |
| | | | RM-12 RESIDENTIAL MULTI FAMILY-12 | | IR INSTITUTIONAL RESIDENTIAL |
| | | | ON OFFICE NEIGHBORHOOD | | ML MANUFACTURING LIGHT |
| | | | OP OFFICE PARK | | MG MANUFACTURING GENERAL |
| | | | PR PARK AND RECREATION | | MH MANUFACTURING HEAVY |
| | PID/GDP/P.I.P. 2015-01 & 2017-01 | | | | SHORELAND OVERLAY ZONING RESTRICTIONS |
| | P.I.P. 2000-02 | | | | WELL HEAD PROTECTION OVERLAY ZONING DISTRICT BOUNDARY |
| | CITY LIMITS | | | | WELL LOCATION |



Updated April 2019

This map serves as a representation of the approximate zoning district areas and locations of the City of Delavan. Baxter & Woodman, Inc. the authors of this map, cannot be held liable for any errors or omissions, or for the results obtained from the use of this information.

WALWORTH COUNTY GIS SERVICES
 DATE: 4-24-19 @ 10:00am
 PERSON: J.A.T. (JAT)