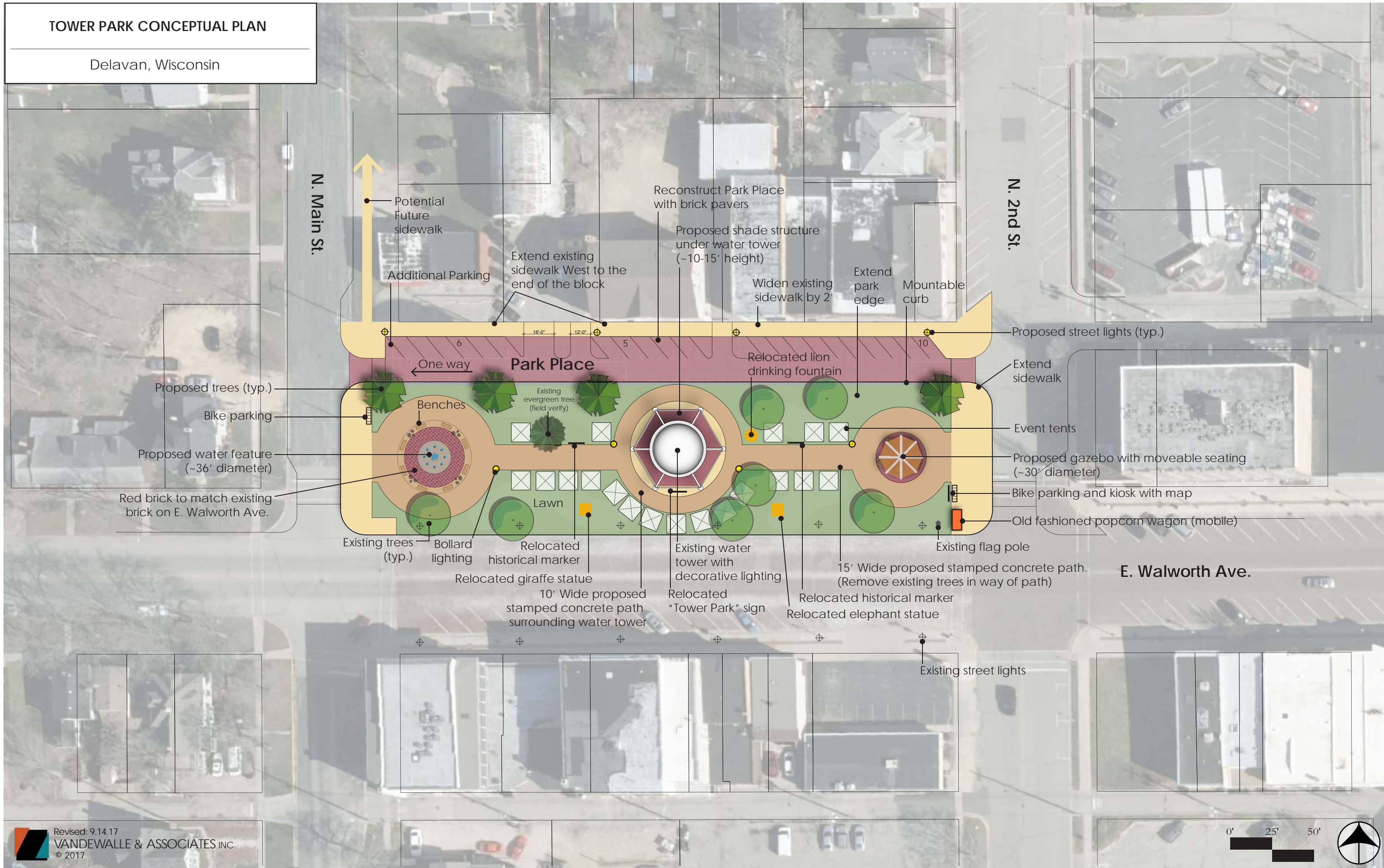


# TOWER PARK CONCEPTUAL PLAN

Delavan, Wisconsin



N. Main St.

N. 2nd St.

E. Walworth Ave.

Potential Future sidewalk

Reconstruct Park Place with brick pavers

Proposed shade structure under water tower (~10-15' height)

Additional Parking

Extend existing sidewalk West to the end of the block

Widen existing sidewalk by 2'

Extend park edge

Mountable curb

Proposed street lights (typ.)

One way

Park Place

Relocated lion drinking fountain

Extend sidewalk

Proposed trees (typ.)

Bike parking

Proposed water feature (~36' diameter)

Red brick to match existing brick on E. Walworth Ave.

Benches

Existing evergreen tree (field verify)

Event tents

Proposed gazebo with moveable seating (~30' diameter)

Bike parking and kiosk with map

Old fashioned popcorn wagon (mobile)

Existing trees (typ.)

Bollard lighting

Relocated historical marker

Existing water tower with decorative lighting

15' Wide proposed stamped concrete path. (Remove existing trees in way of path)

Existing flag pole

Relocated giraffe statue

10' Wide proposed stamped concrete path surrounding water tower

Relocated "Tower Park" sign

Relocated historical marker

Relocated elephant statue

Existing street lights

